

Troag, suspension design Luca Nichetto 2010

FOSCARINI



Troag is a suspension lamp with a light, linear, suspended shape that emanates a sense of natural familiarity, at home or at work. Inspired by a canoe-shaped wooden bowl traditionally found in Swedish homes, Troag is created in multi-layered wood that is heat curved and whose edges are specially milled to create a dynamic, inclined profile, emphasised by the grain of the wood. Troag's design makes the most of the light, concentrating it downwards to light tables or surfaces in a uniform manner. An opaline screen situated beneath the fluorescent tube hides the

technical components from view and allows the lamp to be used at different heights. There are three available finishes – white, natural wood and black lacquered wood – and three sizes – the largest is over two metres in length, to launch a brand new signal of style and warmth in any environment, from homes to contract spaces.

Troag, suspension technical info

FOSCARINI

Description

Suspension lamp with direct and indirect light. Diffuser made of hot curved multilayered wood processed on the edges with a 5-axis mill, matt extruded PMMA internal diffuser. The light is diffused lightly upwards through two slits situated at the top. Two stainless steel suspension cables with satin finish steel mechanical ceiling attachment and transparent electrical cable. Ceiling rose with galvanized metal bracket and satin finish chromed batch dyed ABS cover.

Materials Curved plywood and PMMA

Colors white, black, natural



Brightness light
direct down light



Model

large

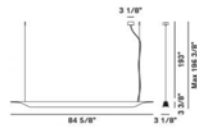
Weight
net lbs: 7,72
gross lbs: 13,23

Packaging
vol. cub. ft.: 1,907
n. boxes: 1

Bulbs
fluorescent 1x80W G5

electronic ballast

Certifications
120-277V 



medium

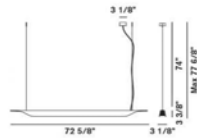
Weight
net lbs: 6,17
gross lbs: 11,46

Packaging
vol. cub. ft.: 1,660
n. boxes: 1

Bulbs
fluorescent 1x54W G5

electronic ballast

Certifications
120-277V 




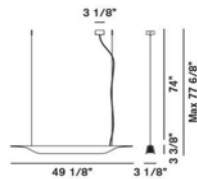
small

Weight
net lbs: 3,97
gross lbs: 8,60

Packaging
vol. cub. ft.: 1,165
n. boxes: 1

Bulbs
fluorescent 1x24W G5

Certifications
120-277V 



[2D/3D drawings](#)
[photometric info](#)
[assembly instructions](#)

download area

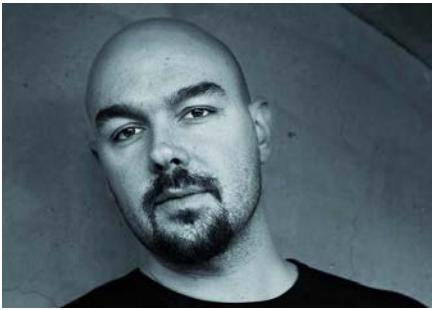


Troag, suspension designer

FOSCARINI

Luca Nichetto

Born in Venice where he graduated in Industrial Design. In 2006 he founded his studio, Nichetto&Partners, that deals with Design Consultant as well as Industrial Design. He held workshops in different universities in Italy and abroad and he takes part to exhibition in Europe, United States and Japan.



Watch the video Troag



Go to concept site for Troag
www.foscarini.com/troag